

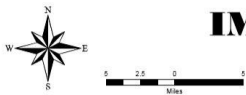
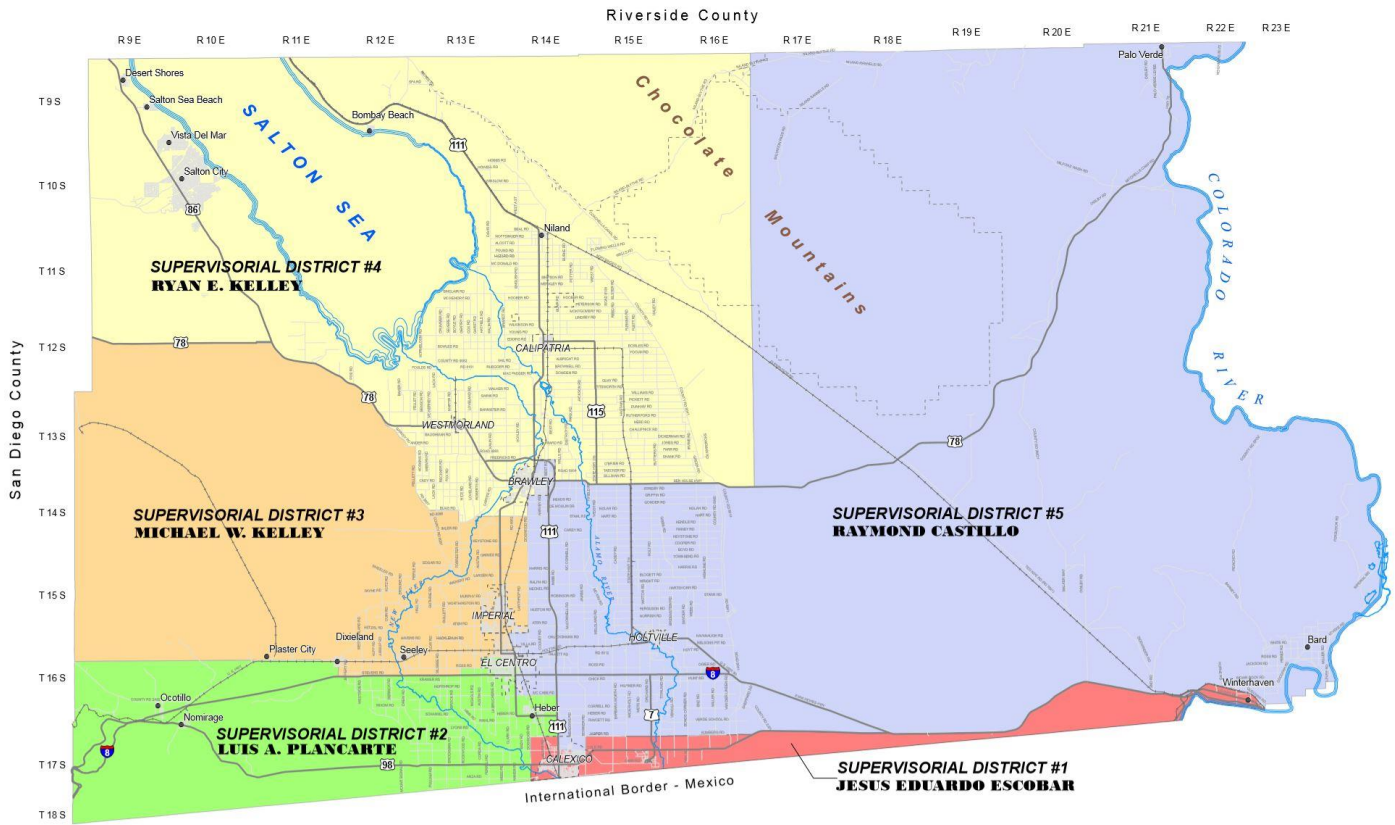


# 2019 LEGISLATIVE PLATFORM

*Building opportunity by leading California's renewable energy future while remaining true to our rich agricultural heritage.*

# IMPERIAL COUNTY BOARD OF SUPERVISORS

- Jesus Eduardo Escobar ..... District 1
- Luis A. Plancarte ..... District 2
- Michael W. Kelley ..... District 3
- Ryan E. Kelley, Chairman ..... District 4
- Ray Castillo ..... District 5



## IMPERIAL COUNTY SUPERVISORIAL DISTRICT MAP

Planning and Development Services - Assessor's Office  
County of Imperial, California

Revised - 12/2018 LC-DN



## COUNTY EXECUTIVE OFFICER

**Tony Rouhotas, Jr.**  
940 Main Street, Suite 208  
El Centro, CA 92243  
(442) 265 – 1001

# TABLE OF CONTENTS

<i>Imperial County Introduction and Platform Purpose</i> .....	4
<i>Review of 2018 Legislative Session</i> .....	5
<i>2019 Legislative Goals and Priorities</i> .....	8
• <b>General Guidelines</b> .....	8
<i>Administration and Finance</i> .....	9 – 12
• <b>General Principles</b> .....	9
• <b>General Government</b> .....	10
• <b>Government Finance</b> .....	11
• <b>Assessor</b> .....	12
• <b>Library</b> .....	12
• <b>Workforce Development</b> .....	12
• <b>Veterans Service Office</b> .....	12
• <b>Retirement</b> .....	12
<i>Public Safety</i> .....	12 – 15
• <b>Sheriff’s Department</b> .....	12
• <b>County Fire/OES</b> .....	13
• <b>Probation</b> .....	14
• <b>District Attorney</b> .....	15
<i>Natural Resources and Development Management</i> .....	15 – 20
• <b>Agriculture</b> .....	15
• <b>Weights &amp; Measures</b> .....	16
• <b>Air Pollution Control</b> .....	16
• <b>Airport</b> .....	17
• <b>Planning &amp; Land Use</b> .....	17
• <b>Economic Development</b> .....	18
• <b>Transportation and Public Works</b> .....	19
○ <b>Border Infrastructure</b> .....	19
<i>Health and Human Services</i> .....	20 – 28
• <b>Social Services</b> .....	20 – 24
○ <b>CalWorks</b> .....	21
○ <b>Children &amp; Family Services</b> .....	22
○ <b>Adult Protective Services</b> .....	23
○ <b>In Home Supportive Services</b> .....	23
○ <b>Medi-Cal/Managed Care</b> .....	23
• <b>Public Health</b> .....	24 – 25
○ <b>Emergency Medical Services</b> .....	25
• <b>County Public Administrator – AAA</b> .....	26
○ <b>Public Administrator/Guardian/Conservator</b> .....	26
○ <b>Area Agency on Aging</b> .....	26
• <b>Child Support Services</b> .....	26
• <b>Behavioral Health</b> .....	27 – 28
○ <b>Substance Use Disorder Treatment Programs</b> .....	27
○ <b>Mental Health</b> .....	27

## **IMPERIAL COUNTY INTRODUCTION AND PLATFORM PURPOSE**

---

Imperial County is home to approximately 180,000 residents whom live and work within its seven cities (Brawley, Calexico, Calipatria, El Centro, Holtville, Imperial and Westmorland) and eight unincorporated communities (Bombay Beach, Heber, Niland, Ocotillo, Palo Verde, Salton City, Seeley and Winterhaven). The county was the last to be established in California in 1907; however, it is the ninth largest California County encompassing 4,284 square miles.

Imperial County has much to offer. We have a rich agricultural heritage, which includes the production of half of our nation's winter vegetables, an extensive amount of renewable resources, including geothermal, wind, and solar, a wide-range of cultural and outdoor recreational activities with hundreds of points of interest such as the Imperial Sand Dunes Recreation Area, a magnet for off-road enthusiasts, and the Sonny Bono Salton Sea National Wildlife Refuge, a renowned birding site, and a lively population with frequent family-oriented community events.

This Legislative Platform is a statement of the goals and priorities of the Imperial County Board of Supervisors and establishes the basis for its advocacy efforts with the Executive and Legislative branches of the State of California and the federal government of the United States. To support the accomplishment of these goals and priorities, the Imperial County Board of Supervisors adopts the following general guidelines to assist County staff and legislative advocates in evaluating legislative efforts and executive and regulatory actions.



## REVIEW OF THE 2018 LEGISLATIVE SESSION

---

### AT THE STATE LEVEL:

As is normally the case in the second year of a Legislative Session, the Governor and Legislature were anxious to wrap up major pieces of legislation prior to the fall election cycle. This year was no exception for significant issues to be front and center as the Legislature finished their work before the August 31 deadline, particularly as it also marked the end of Governor Brown's tenure. Among the final issues considered by the Legislature were wildfire liability and vegetation management, bail reform and net neutrality.



Below are the legislative efforts the County sponsored this year:

- **Assembly Bill 2746 (E. Garcia)**—The County sponsored this legislation to fix a loophole in State tax law regarding tax-defaulted auctions of property. The County worked with the California Association of Treasurers/Tax Collectors and the Counties of Los Angeles and Merced. The bill was successfully moved through the legislative process and signed into law by the Governor.
- **Assembly Bill 893 (E. Garcia)**—The County sponsored Assembly Bill (AB) 2208 and AB 893 this year to push for a more significant procurement of geothermal energy resources. Assembly Bill 893 became the final vehicle for this legislative effort in the final weeks of Session.

Despite the efforts of the County and other stakeholders over the course of the year—including multiple meetings conducted by the County leading up to this year's Legislative Session—the legislation failed to secure votes necessary for passage before adjournment. Assembly Member Garcia and Senator Hueso were champions in this effort and the County will be revisiting the issue of procurement in the next legislative year.

Other legislation the County actively participated in this legislative year included:

- **Assembly Bill 1945 (E. Garcia)**—The County supported legislation (AB 1945) to allow for daytime population numbers to be considered for greenhouse gas reduction funds. This legislation would have provided additional opportunities for Imperial and San Diego County to compete for grant funding. The bill successfully moved through the Legislature but was vetoed by Governor Brown due to its broad implications for the various cap and trade programs.
- **Senate Bill 100 (De León)**—This bill, authored by Senator Kevin de León, was introduced last year to increase the State's procurement of renewable energy. The Legislature approved the bill during the last days of Session and sent it to Governor Brown who signed it into law. Specifically, the bill would increase the requirement for renewable energy to 50 percent by 2026, 60 percent by 2030, and 100 percent by 2045.
- **Senate Bill 1365 (Hueso)**—The County participated in an initial stakeholder meeting organized by Senator Hueso to discuss the issue of governance of restoration efforts at the Salton Sea. The introduction of language for the bill occurred in the final month of

Legislative Session. The County met with Senator Hueso, Assembly Member Garcia and other stakeholders at the end of August and committed to working with them on legislation for the Salton Sea next year.

- **Assembly Bill 1900 (Brough)**—To facilitate mineral extraction efforts in the County, this bill extends the State’s Capital Investment Incentive Program (CIIP), which allows a local government to offer a local tax abatement to qualified manufacturers. The CIIP was enacted in 1997, and expanded in 1999, to provide local governments with an opportunity to attract large manufacturing facilities to invest in their communities and to encourage industries such as high technology, energy, environmental, and others to locate and invest in California.

The County will continue to be active as California transitions to its next Governor, including the changes at all levels of the State bureaucracy. Similarly, changes following the November elections will present further opportunities for the County to advance its agenda in Sacramento.



### **AT THE FEDERAL LEVEL:**

With tax reform and healthcare policy off the table, members of Congress turned their attention to other issues during the 2018 legislative session. Early in the year, lawmakers approved and President Trump signed into law a massive \$1.3 trillion omnibus appropriations bill. Passage of the legislation – which provided funds for every federal department through September 30, 2018 – capped a budget stalemate that was marked by five short-term funding patches and two brief government shutdowns.

Congress subsequently approved in late September five of the 12 appropriations measures for fiscal year 2019. The balance of the budget was being funded through two Continuing Resolutions that ran through December 21, 2018. After a 35-day partial government shutdown, the longest U.S. government shutdown in history, the President signed a \$333 billion omnibus appropriations bill on February 15, 2019.

In addition to the budget, and despite the political wrangling that typically accompanies a midterm election cycle, Congress was able to make progress on several other big-ticket items in 2018, including passing multi-year reauthorizations of the Federal Aviation Administration (FAA) and the Water Resources Development Act (WRDA). On the other side of the coin, a number of high-profile issues failed to advance, such as a comprehensive overhaul of the nation’s immigration laws.

Imperial County waged a proactive and effective lobbying campaign in the nation’s capital. Key developments on a number of the County’s legislative priorities are discussed below.

- In a victory for Imperial County, the final fiscal year 2018 budget included an additional year of mandatory funding for the PILT program. The Department of the Interior subsequently released \$552.8 million in program payments to over 1,900 local governments, representing the largest amount of PILT funds awarded in the history of the program. For its part, Imperial County received almost \$3.1 million in PILT, down from nearly \$3.5 million in 2017. The reduced payment is solely attributed to the loss of eligible federal land within the County, as BLM last year transferred administrative jurisdiction of 226,700 acres of public lands to the Navy for the Chocolate Mountain Aerial Gunnery Range.
- Imperial County continued to aggressively advocate for funding for the second and final phase of the Calexico West Land Port of Entry (LPOE) modernization and expansion

project. As of the end of 2018, the fiscal year 2019 Financial Services spending measure (HR 6147) remained unfinished; however, fiscal year 2019 appropriations package (H.J. Res. 31) included an appropriation of \$191 million for the Calexico LPOE project. Although the allocation was not the full amount of \$276 million needed to complete Phase II, the County is committed to securing the remaining estimated expense of \$85 million for fiscal year 2020.

- Imperial County was successful in advocating for key aviation-related priorities as part of the aforementioned multi-year FAA bill (HR 302; PL 115-254). The final legislation provides five full years of programmatic and budgetary authority for federal aviation operations (through fiscal year 2023), including increased discretionary funding for the Essential Air Service (EAS) program. Imperial County relies on EAS funding to provide subsidized air service to Los Angeles International Airport.
- Congress approved and President Trump signed into law a fiscal year 2019 Energy & Water spending bill (PL 115-244) that includes \$300,000 for the Salton Sea Research Project. The project was established to help identify financially feasible and efficient alternatives to address water quality conditions, reduce potential impacts to air quality, and maintain quality habitat for migratory birds and endangered species in the Salton Sea region.
- In early 2019, Congress approved an omnibus public lands package (S 47) that included provisions from legislation championed by Senator Dianne Feinstein and Congressman Juan Vargas. Specifically, S 47 will set aside 81,880 acres of public land in Imperial County for the protection of nationally significant ecological, recreational, archeological, and cultural resources. However, due to the Navy's strong opposition, the legislation did not include language that would have transferred an additional 3,500 acres of surrounding BLM land to Imperial County to expand and develop the old Holtville Airport site.
- In mid-December, the five-year \$867 billion Farm Bill with strong bipartisan support. In a win for Imperial County, the bill included provisions that would expand federal funding opportunities for Salton Sea restoration efforts. For example, the measure reauthorized USDA's Regional Conservation Partnership Program (RCPP) at increased funding levels. Another potential funding opportunity is available through the Watershed Protection and Flood Prevention Program, which helps fund projects that protect and restore watersheds. The program's authorization was increased from \$85 million to \$200 million per year.
- The bill also included a provision that removed hemp from the definition of "marihuana" under the *Controlled Substances Act* (CSA). The language legalized the industrial cultivation of hemp, with some restrictions that requires shared state-federal regulatory power over hemp production and cultivation. The states will have to submit a plan to license and regulate hemp that the USDA would have to approve. If states opt to not devise and submit a plan, then hemp cultivators must apply for a license and comply with a federally-run program. Hemp farmers also would be eligible to collect crop insurance under this provision.

Looking ahead to 2019, Imperial County will continue to work on a wide range of federal programs that are of critical importance to the County. As always, the fate of numerous federal spending programs and major policy initiatives will be decided in the halls of Congress. In addition, the Trump administration is expected to continue pursuit of its aggressive federal regulatory agenda, which includes the ongoing rollback and revision of Obama-era rules and regulations.

## General Guidelines

### Fiscal Stability

Support efforts to generate new intergovernmental revenue and/or enhance existing revenue and reimbursement levels.

Oppose the loss or redirecting of existing revenues and/or the creation of additional unfunded mandates to the County.

### Efficient Service Delivery/Operations

Support efforts to streamline processes and promote operational enhancements relevant to the County's services.

Oppose efforts that create undue fiscal and operational burdens on departments with little or no benefit to the public.

### Local Control

Ensure local authority and control over governance issues, land use policies and the delivery of services, including flexibility and customization in designing and implementing policies and services that are responsive to local preferences and needs.

### Economic Expansion

Support efforts to facilitate orderly economic expansion and growth, including regional approaches.

Oppose legislative efforts that create undue burdens on businesses and curtail economic growth opportunities.

### Collaboration

Partner with neighboring jurisdictions on infrastructure and other large-scale projects, when possible.

Support the advocacy efforts of organizations the County holds membership in.

Collaborate with public and private sector entities on mutually beneficial issues.



## **LEGISLATIVE PROPOSALS AND ISSUES BY FUNCTIONAL AREA**

---

### **ADMINISTRATION AND FINANCE**

#### **General Principles**

The primary goal of the County's elected representatives and its employees is to serve and support the social, economic, health, safety and well-being of its residents. To this end, in 2019 the Imperial County Board of Supervisors supports the following general principles. County staff, the Executive Office and its legislative advocates, will apply these general principles to evaluate legislation and other proposals, make recommendations to the Board of Supervisors and take action on behalf of the County.

1. Encourage and seek legislation that facilitates orderly economic expansion and growth, and increases the opportunity for discretionary revenues.
2. Support legislative efforts that ensure Imperial County's authority to govern itself and oppose legislation which will hinder or limit the County's self-rule authority.
3. Continue to encourage local agencies and governments to cooperate for the betterment of the community and encourage voluntary regional solutions to regional problems, including funding and support for capital acquisition projects.
4. Seek cooperation with state and federal governments on regulatory and administrative issues affecting the County, including those related to health care, public safety, the environment and transportation to ensure the protection and well-being of its citizens.
5. Encourage and seek legislation that protects the County's quality of life, its diverse natural resources, and preserves the essence and history of the County.
6. Support legislative efforts that would align responsibility with authority and provide the necessary resources to execute the responsibility.
7. Support legislative efforts that would simplify or eliminate governmental regulation of local government or businesses, or eliminate duplication of federal, state and local requirements.
8. Support legislative efforts that allow local, state or federal governments to streamline operation and business efficiency.
9. Support efforts, including administrative changes, to implement a state/local fiscal reform plan to stabilize revenues for the delivery of local programs and services, and to increase programmatic and financial flexibility for the County.
10. Support the County's authority to assure mutually acceptable tax sharing agreements for annexations, incorporation, and redevelopment that protect or enhance the County's ability to provide essential services to its constituents.
11. Support legislative efforts that provide tax and funding formulas for the equitable distribution of state and federal monies. Support the change of funding formulas which unfairly disadvantage Imperial County.

12. Support increased state and federal appropriations for County mandated programs and the equitable distribution of local tax revenue among all local government agencies.
13. Support legislative efforts that streamline the state mandate process, making the reimbursement process less lengthy or onerous for local government.
14. Oppose state or federal mandates and the transfer of state or federal programs to the County unless adequate, reliable and on-going revenues are provided.
15. Oppose legislative efforts that would impose federal financial penalties on the County resulting from action or inaction by the state.
16. Maintain close relationships with Imperial County's legislative delegation to foster greater advocacy and understanding of Imperial County's issues.
17. Maintain existing coalitions such as CSAC, RCRC, BECC, NADB, Border Trade Alliance and other associated groups that build onto local efforts and form new coalitions and alliances with other like-minded organizations to strengthen our legislative positions, create economic development and impact the decisions that affect our region.
18. Support legislative efforts to seek a permanent and secure funding source for county law libraries and ultimately transferring all responsibilities, including financial support, for law libraries away from counties to courts or other appropriate state agency, consistent with other court related functions that have been transferred from counties to the state.

### **General Government**

Support comprehensive immigration policy reform. We also support provisions that would bolster security at the Southwest Border, improve border infrastructure at our nation's ports of entry, the deployment and use of additional surveillance technology, and the creation of a functional agricultural worker program.

Support budget proposals, appropriations and grants that will fully reimburse border community's law enforcement agencies for their added costs to provide services to aid the federal government's responsibility to maintain a secure border and efficient ports-of-entry.

Support efforts to allow non-traditional funding for the development of critical infrastructure in areas such as ports-of-entry that are no longer assured of reliable funding from the federal government.

Support the development of the Holtville Airport as an international cargo/passenger airport.

Support plans, programs, projects and funding for purposes related to the restoration of the Salton Sea, economic development in the region, and to mitigate potential air quality issues resulting from changes in elevation of the Sea.

Continue collaborating with other agencies and entities, public and private, to secure a permanent solution for the restoration of the Salton Sea and to mitigate impacts to the Salton Sea which result from lessened inflows to the Sea.

Support assurance of a Salton Sea restoration plan that will provide for long-term habitat protection, recreation, economic stimulus, salinity control, and a constant elevation with a reliable and consistent water source, and support immediate funding of first step “no regrets” projects that will begin the restoration process.

Support efforts to protect the water rights for our region. We support regionally directed local solutions to California’s water problems, including storage, ground water development, desalination, reclamation, recycling, storm-water retention and appropriate conjunctive use in urban California.

Continue to seek state assurances that the beneficiaries of the water transfer, and not Imperial County interests, will be responsible for fully mitigating environmental consequences of the water transfer.

Support efforts to improve restoration and conservation of the New River.

Seek full funding for law enforcement on the Imperial Sand Dunes and west desert areas, and also seek additional federal funding for BLM so they can maintain their own law enforcement presence and resolve trash disposal problems on federal lands.

Oppose proposals to use OHV funds as a loan to General Fund as this will reduce funds available to provide dunes and desert law enforcement assistance.

Support efforts to increase access to capital for the construction, reconstruction, rehabilitation, or replacement of public infrastructure or affordable housing projects.

### **Government Finance**

Support full Payments in Lieu of Taxes (PILT) funding and Secure Rural Schools (SRS) funding as both are vital to continue providing critical programs and services provided on federal lands in rural communities.

Support county reimbursement for the extraction of geothermal resources on our public lands. Support efforts to ensure that projects built on federal or state lands pay royalties based on their production of electricity and that a portion of those royalties are shared with the counties and not subject to deduction from our existing PILT payments.

Support language to clean-up the existing language in the Resources Code that directs the way funds from OHV registration fees (OHV in-lieu monies) are distributed to counties so that the money is distributed to areas with the greatest use of OHVs rather than by population.

Support legislation that improves access to cap and trade resources, such as the Greenhouse Gas Reduction Fund, so that the funding can address a number of local government priorities. Support maximum funding for and a long-term authorization of the State Criminal Alien Assistance Program (SCAAP), Operation Stonegarden, and other programs to reimburse the county for its costs resulting from aiding the federal government in maintaining a secure border.

Support legislation that protects the local share of tax revenues.

Oppose legislation that would restrict a county’s authority to contract out.

### **Assessor**

Support funding for programs that enhances local property assessment efforts.

### **Library**

Support full funding of the statewide Public Library Funds, monies for the California Library Literacy Services and for the collaborative systems.

Support full funding for the Institute of Museum and Library Services.

Support funding to add public libraries to the CENIC (Corporation for Education Network Initiatives in California).

Support the exemption of public library tax districts from the Education Revenue Augmentation Fund.

### **Workforce Development**

Support legislation that will help vulnerable populations, including out-of-school youth, veterans, unskilled and low-skilled workers, foster youth, long-term unemployed, workers with disabilities, formerly incarcerated individuals, farmworkers, and other economically disadvantaged people, move out of poverty and into meaningful employment opportunities.

Support adequate funding to support the mission of the Workforce Innovation and Opportunity Act (WIOA) and to develop a highly competitive and effective delivery system.

### **Veteran Services Office**

Support funding for services mandated and essential to maintain the dignity and health of veterans. This will include the following: Faster access to earned benefits, Education, Improved Mental Health Care to include Military Sexual Trauma, Improved Health Care, Improve Job Opportunities and Employment Rights, Employment Credit, Respect of National Cemeteries, Increase Veteran Outreach and Veteran Services Offices.

### **Retirement/Pension Reform**

Oppose state pension reform initiatives that impose unnecessary restrictions on new costs on the local county Retirement Program.

Oppose initiatives that make the process for '37 Act retirement systems to separate from the county less transparent for taxpayers, system payers, and the employers of both the county and its retirement system.

### **PUBLIC SAFETY**

#### **Sheriff's Department**

Support efforts to create a funding mechanism for staffing the facilities built under AB900 or SB1022.

Support changes to the California Rules of Court, Rule 810, to include all court-related costs currently paid by Counties.

Support efforts to increase portions allotted to Law Enforcement for the Off-Highway Vehicle Enforcement Safety Team (OHVEST).

Support increased funding for Disaster Preparedness/Emergency Services and the inclusion of Information Technology and Regional Communications Interoperability as part of the services to be funded or included in the claims process.

Support increase funding for physical improvements and new construction needed at County jails, juvenile facilities, coroner facilities, and justice service administrative and support facilities.

Support efforts to re-establish or improve services of Crime Labs.

Support ongoing SB 1022 funding.

Support efforts that would allow Prisoner Rape Elimination Act (PREA) mandatory inspections to be done by jail professionals from other counties at no cost to either county.

Support increased funding for Second Chance Act programs in the annual federal appropriation process.

Support funding of the Mentally Ill Treatment Offender and Crime Reduction Grant Program.

Support continued federal and state funding for adult criminal justice facilities that will meet needs created by realignment, i.e., programming space, substance abuse, and mental health treatment, etc.

Oppose legislation that links AB109 funding to recidivism rates.

Oppose legislation that supports decreasing jail standards.

Oppose legislation regarding the elimination of solitary confinement or administrative segregation. County jails are very different from state correctional facilities and should not be included in any discussions or decisions regarding the issue of solitary confinement or administrative segregation at state correctional facilities.

Oppose additional FCC regulations regarding county jail inmate phone calls.

### **County Fire/OES**

Support legislation and budget actions that enable the County to adequately plan for, respond to, and receive reimbursement for emergency disasters.

Support legislation and budget actions that will fund regional disaster management systems and resources to respond to emergencies, acts of terrorism and other catastrophic events.



Support legislation and budget actions that will increase minimum funding for required OES planning activities. Support the creation of a move from a formula based distribution to a joint minimum/formula based distribution of funding.

Support an adjustment in the threshold numbers for federal assistance. Currently, each county, no matter their size, per capita income status, or other pertinent criteria, must meet the same thresholds as larger urban counties thus creating inequity for low income, low population areas.

Support legislation that will fund the AFG and SAFER Grant programs at the FY 2011 amount of \$405 million.

Support legislation that will restore funding for the Urban Search and Rescue program and protect funding for homeland security grant programs, like the Urban Areas Security Initiative and the State Homeland Security Grant Program.

### **Probation**

Support effective reentry services in order to improve a prisoner's probability to successfully reintegrate into his/her community.

Support legislation that will expand the resources of the County to address the needs of its offender population, including medical care, criminological program needs, and basic subsistence programs such as employment, job training, and housing.

Support early intervention, prevention of crime and offender rehabilitation efforts and programs.

Support state and federal funding for medical services for incarcerated persons.

Support legislation that would expand the availability of mental health care for the offender population while in custody and while on probation.

Oppose legislation that mandates an enrichment of staff ratio for Juvenile Hall and County Jail without supporting funding, e.g. staff ratio for juveniles held in one-on-one supervision.

Support legislation to provide a federal tax intercept for state and local agencies to recover outstanding restitution ordered to the victims of crimes and other delinquent court ordered fines, penalty assessments, and fees associated with criminal or juvenile proceedings.

Support sufficient funding for realigned responsibilities for juvenile and adult populations, to protect funding for the Local Revenue Fund 2011 and the SB 678 funding streams.

Support legislation for federal reimbursement for the capitated rate for undocumented juvenile detainees.

Support efforts that would track the impacts to the families and children of the offender population through AB 109 and seek appropriate remedies.

Support efforts to create better coordination of mental health and Medi-Cal services for offenders prior to their release.

Support legislation to create incentives or programs for the private sector to hire ex-offenders. Successful assimilation into a community is critical to the efforts to reduce recidivism. Finding meaningful and lasting employment is an important component of such efforts.

Support efforts that enhance and augment vital community services that address victims, juvenile and adult offenders' needs and targets criminological dysfunctions or community deficiencies.

Seek to ensure that all programs, services, efforts or actions that affect juvenile or adults on probation are supported by valid data or successful outcomes that achieve the objectives.

### **District Attorney**

Support funding of prevention and intervention programs with the long-range goal of reducing costs in the juvenile and adult justice systems.

Support legislation and budget actions that:

- Provide adequate resources to deliver services.
- Ensure the safety of the public, law enforcement officers, first responder personnel, and property of County residents.
- Provide funding for information technology initiatives that improve coordination between multiple agencies at all levels of government.

Oppose legislation and budget actions that:

- Reduce funding at the State and local level for public safety and first responders.
- Compromise the safety of the public, local law enforcement or first responder personnel.
- Impede the local law enforcement or first responder's ability to deliver services.

Support funding that will assist with gang enforcement.

Support full funding for the High Intensity Drug Trafficking task force (HIDTA).

Support full funding of grants that fund public safety efforts, e.g. COPS, Law Enforcement Technical, Juvenile Justice Crime Prevention Act, etc.

Support funding that will enhance criminal justice and public safety information technology infrastructure.

Support funding that will allow for multi-agency integration of criminal justice related data.

## **NATURAL RESOURCES AND DEVELOPMENT MANAGEMENT**

### **Agriculture**

Support legislation that would increase cost recovery to local government for providing mandated services and programs.

Support legislation that would protect our citizens, agricultural industry, and environment from the introduction of invasive species of pests, including insects, weeds, vertebrates, and plant diseases.

Support adequate funding for pest prevention activities including pest exclusion, pest detection, pest management/eradication, and public outreach.

Support funding for education, outreach and compliance assessment activities related to the safe use of pesticides.

Support increasing environmental review of new school site proposals so that if they are sited in agricultural areas, mitigations such as buffers, setbacks, and pick-up/drop-off locations are incorporated onto the new school footprint and designed to minimize interference with agricultural operations.

Support budgetary efforts to maintain funding for agricultural border stations.

Support research on invasive species pathways as well as funding mechanisms to close potential pathways.

Support legislation for state and/or federal programs that promote public awareness of invasive species and of their detrimental effects on agricultural as well as residential landscaping and gardening.

Support legislation that improves funding for the California and National Organic Programs and enhances the integrity of the programs.

Support legislation that improves federal and/or state funding to counties for Wildlife Services and managing conflicts with wildlife to protect the health and safety of the public, and the health and value of agriculture, the environment, and other resources.

Support legislation regarding the agricultural production and cultivation of industrial hemp that establishes a meaningful regulatory framework and standards in California.

### **Weights & Measures**

Support legislation that improves protection of consumers from unfair business practices, which may include but are not limited to transactions involving inaccurate weights or measures, inaccurate pricing, inaccurate or unclear net quantity statements, and deceptive advertising.

Support legislation to protect industry and promote fair business competition.

Support more flexible sampling methodology for scanner inspections to provide additional consumer protection.

Support legislation that preserves and enhances funding resources for weights and measures programs at the state and local level for consumer protection.

Oppose legislation that would weaken or remove existing consumer protection laws and regulations.

### **Air Pollution Control**

Support working with the US EPA and CARB to identify air quality impacts caused by the emissions from idling vehicles at our land ports of entry and to develop solutions to lessen those emissions and their impacts.

Support federal legislation that will streamline and clarify extraordinary/high wind events rules.

Support legislation to require additional, cost effective reductions in mobile source emissions.

Support legislation that reduces or eliminates administrative burdens on Air Pollution Control Districts and regulated sources that provide little or no air quality benefits.

Oppose legislation that prohibits Air Pollution Control Districts from imposing emission limits, testing, and reporting requirements on already regulated stationary source categories.

Support legislation that will revise federal emission offset requirements for designated marginal, moderate or serious non-attainment areas to allow payment by project proponents in such areas to a state or district for mitigation programs in lieu of offsets.

Support legislation that requires project applicants to pay lead and responsible agencies for all costs associated with CEQA reviews and indemnify such agencies against all court costs, attorney fees and judgments related to their projects.

Support legislation to maintain state and federal grant funds to air districts at levels commensurate with state and federal mandates.

Support increased funding of emission reduction programs related to stationary and mobile sources.

Support funding to reduce diesel emissions from school buses.

Support legislation that would require that fines and penalty monies for violations issued by an air district remain with that air district.

Support state funding to air districts for emission reduction projects (e.g. Carl Moyer program) in a manner that is more closely based on population distribution.

Support increasing state subvention funding for air pollution control districts to pay for state mandated air pollution control activities that help protect public health.

Support funding (e.g. Prop. 1B) to reduce emissions from goods movement.

Seek the cooperation of landowners of land beneath the Salton Sea as we work to effect the mitigation of exposed lands.

### **Airport**

Support the County's eligibility in the Essential Air Service (EAS) program and adequate funding for EAS.

Support funding for the Airport Land Use Commission (ALUC), a state-mandated program, that requires the Commission to review development plans, building plans or other oversight responsibilities.

### **Planning and Land Use**

Support legislation to reform CEQA by changing the standard for standing to match up with NEPA. The need is to return CEQA to what it was originally intended – a disclosure document.

Support legislation to eliminate local match or loan requirements for State funded grants to be utilized in areas with high levels of poverty and unemployment.

Support legislation that streamlines State regulatory requirements for new and expanding businesses to promote retention, expansion and new businesses in Imperial County.

Support legislation that would establish sites for facilities in our community in order to facilitate economic development.

Support funding to pay for, or provide low or no interest loans, upgrades to water or wastewater infrastructure in small, economically disadvantaged rural communities.

Support legislation that promotes housing development by adequately funding infrastructure.

Oppose legislation that arbitrarily limit fees or other exactions necessary to support county infrastructure, facilities, or services required by new development.

Oppose legislation that would result in a loss of local control over land use decision-making.

### **Economic Development**

Support legislation that creates new and improves already existing tools for economic development, such as Opportunity Zones and other incentives for business development and retention.

Support legislation that will improve unemployment rates, per capita incomes, and poverty rates.

Support the protection of the economic development set aside in the non-entitlement CDBG program.

Support legislation that assists businesses in their efficiencies, but not at the expense of its workforce.

Support legislation, which helps to create and locate baseline type businesses such as manufacturing or production type facilities.

Support efforts which seek to produce incentives for the creation and location of manufacturing businesses, but also provide locals authorities with the ability to fund infrastructure improvements using tools such as incremental financing, i.e. Enhanced Infrastructure Financing Districts.

Support efforts to create new incentives, increased permitting authority, maintain a viable and productive public benefits agreement, protect prime farmland from development, and support policies and regulations that will lead to the development of additional renewable resources in Imperial County, including, but not limited to, the Salton Sea Known Geothermal Resource Area.

Support legislation that will require guaranteed future payment in lieu of taxes for any lands that are donated to the government in perpetuity and dedicated to provide habitat for wildlife species that are affected by the project.



Support policies, practices, incentives, and other processes to cultivate the immense potential for the local production of bio fuels from renewable resources such as algae, sugar cane, biomass, bio-digesters, and more.

Support efforts to ensure that projects built on federal or state lands pay royalties based on their production of electricity and that a portion of those royalties are shared with the counties and not subject to deduction from our existing PILT payments.

Support legislation that will expand the local permit authority for geothermal power plants from the current 50 megawatts to 125 megawatts.

Support funding to expand the scope of the efforts that will create an overlay for renewable energy project sites similar to the existing geothermal overlay.

Support efforts in the field of mineral extraction from geothermal brine including research, development and production.

### **Transportation and Public Works**

Support legislation that provides additional flexibility for counties and streamline project delivery and environmental review processes for roads projects funded from SB 1 transportation revenues.

Support increase funding for the Highway Bridge Programs and/or alternative programs to allow for future replacement of County maintained bridges and approaches.

Support legislation and other efforts to obtain funding to complete the replacement of the Anza Road Bridge.

Support requests for additional technical assistance from Caltrans regarding Disadvantaged Business Enterprise (DBE) participation.

Support the alignment of the current Local Assistance Procedures Manual with the Code of Federal regulations.

Support efforts to increase resources for local governments to develop the necessary infrastructure to implement organics diversion programs.

Oppose legislation that would allow any increase in truck length or weight, which would cause significantly more damage to our transportation infrastructure.

Oppose any “borrowing” from any State transportation account in order to balance the State General Fund budget as it results in delays in delivering local projects and makes completion of those projects more expensive.

Oppose the secession of the State of California from the Union or split into separate states as this will negatively affect available federal funds for road and infrastructure projects.

Oppose efforts to use transportation revenues outside their intended purposes.

### **Border Infrastructure**

Support adequate funding of the United States-Mexico Border Water Infrastructure Program (BWIP), which provides assistance to help support drinking water and wastewater projects that improve human health and the environment for border communities.

Support funding of the Coordinated Border Infrastructure program (CBI) at the same or higher level as it was in previous authorizations, including the specific language that limits the expenditures from this fund to the immediate border region. We also support formulas in the legislation that will result in increasing the amount of federal funds that are returned to “donor states” such as California to at least 95 cents on the dollar.

Support additional funding to improve the Ports of Entry that connect Imperial County with Mexicali, specifically we support the full funding for the construction of Phase II of the reconfiguration and expansion of the Calexico West Land Port of Entry and an additional \$40 million dollars to add infrastructure improvements for three (3) additional truck inspection lanes in the Calexico East Land Port of Entry.

Support the construction of additional inspection booths that will include the potential for double stacking or creating additional lane capacity, within the existing Calexico East Land Port of Entry compound.

Support additional state and federal funding to allow for the expansion of capacity of local roadways, specifically Menvielle Road, exiting northbound from the Calexico East Port of Entry to ease ingress and egress and decrease border wait times.

Support federal and state funding and resources to allow for phased improvements at the SR86 border patrol check point that will add additional lanes for inspection to allow for better flow of traffic. We will also seek funding for permanent security and lane widening improvements at full expansion build out.

Support federal funding that will allow all Ports of Entry along the Southern Border to be fully staffed to facilitate secure and efficient operations to reduce current unacceptable delays and air quality impacts.

Support greater public participation in DHS programs such as SENTRI that reduce border wait times while increasing security at our border ports of entry.

Support efforts to allow various kinds of Public Private Partnerships to creatively finance new port infrastructure and/or staffing to speed up the flow of passengers and goods through our international ports-of-entry.

## **HEALTH AND HUMAN SERVICES**

### **Social Services**

Support legislation and budget actions that:

- Provide adequate resources to deliver services to vulnerable populations.
- Ensure the safety of the public, social workers and staff conducting public social services to County residents.
- Provide funding for information technology initiatives that improve efficient delivery of services and coordination between multiple agencies at all levels of government.
- Adequately addresses and supports areas of needs and services identified or as unfunded mandates or impacts from unintended consequences.

- Protects the confidentiality of the image of public social services customers conducting business in our offices.
- Support efforts to effect meaningful reform on the policy of housing insecurity to achieve better outcomes for vulnerable populations.

Oppose legislation and budget actions that:

- Reduce funding at the State and local level for public social services and protective services.
- Compromise or impede the delivery of public social services and protective services.
- Diverts 1991 and 2011 realignment funding from the county for administration, assistance payments and services.
- Any legislation impacting vulnerable populations negatively.

### **CalWORKs and Employment Services**

Support legislation clarifying existing statute allowing partially participating CalWORKs clients to avoid non-compliance status. Clarifying the sanction policy of partial participation gives the State an opportunity to demonstrate its commitment to pursue a more flexible approach towards work participation, one that is focused on client engagement and gradual skill building that lead over time to full participation.

Support legislation to increase the Applicant and Recipient Earned Income Disregards to support employment and impact to poor working families as a result of the minimum wage increases allowing CalWORKs working families access to services such as Child Care, Employment Services and Transportation Services.

Support legislation to CalWORKs working families which:

- Prevents homelessness and increases work participation rate.
- Holds Counties harmless for implementation of State-only requirements that result in Federal sanctions and oppose legislation that requires Counties to share in Federal sanctions.
- Provides full funding for CalWORKs Administration and Employment Services and restoration of Performance Incentives.
- Provides families retention services once self-sufficiency is achieved and maintained for a period of time.
- Provides funding for subsidized employment.
- Maintains State funding for subsidized childcare services for families participating in CalWORKs Welfare-to-Work activities.
- Supports the creation of Welfare-to-Work programs that allows participants to best utilize the 24-month clock to complete combined employment and training activities successfully that are most beneficial to their family.
- Provides support services to help participants meet their overall goals with minimal financial hardship.
- Creates alternatives to the current flat adult sanction for a parent failing to cooperate with program requirements.
- Maintains CalWORKs substance abuse/mental health treatment funding and time frames for treatment.
- Supports CalWORKs funding flexibility for Mental Health/Substance Abuse allocation for individuals eligible for Family Stabilization services.

- Funds Linkages, the collaborative effort between Child Welfare, CalWORKs Eligibility and Welfare-to-Work and the provision of supportive services to CalWORKs parents including Family Stabilization services.
- Supports improvement to CalWORKs Welfare-to-Work to enable the individualized focus on the needs of parents and families.
- Measures County performance in a fair and comprehensive manner that recognizes multiple potential positive outcomes for families.
- Builds a partnership between Federal government, State and County that aligns regulations and moves forward with common goals, which are seamless and uncomplicated for customers and workers.
- Maintains the overall work focus of the program while recognizing that ‘work first’ does not mean ‘work only’. Research indicates that the most successful welfare-to-work programs combine work training and supportive services.

### **Children and Family Services**

Support efforts that advocate for improvements to the child welfare system, including reasonable workloads and caseload standards for workers in all parts of the system to allow for individualized focus on the needs of children and families.

Support efforts that advocate for increased flexibility and funding, for enhanced use of existing funding sources, and for prevention and early intervention strategies to keep families strong and children safe in their communities.

Support efforts that advocate for increased attention to the needs of teenagers who are in the child welfare system, including supports to help them make permanent connections to adults in their lives and successfully transition to adulthood.

Support continued funding for Continuum of Care Reform implementation, Commercial Sexual Exploited Children.

Support a meaningful Statewide Child Welfare Training Budget that strengthens capacity and organizational development to support implementation of mandates such as Continuum of Care and the statewide Child Welfare Core Practice Model (CPM) that are driving expectations toward systemic and systematic change.

Support legislation for funding out of state placements including Approved Relative Caregivers.

Support an AB12 Caseload Study and Housing Navigation Services to validate the need for resources for an unfunded mandated program where counties struggle to meet the needs of foster youth.

Support efforts that advocate for a concerted effort to recruit, support and retain resource families, including relative caregivers, foster families and adoptive parents.

Support efforts that expand the Interstate Compact on the Placement of Children (ICPC) to include a Non Minor Dependent (NMD)/Extended Foster Care Youth/Young Adults to regulate the oversight so that counties and states would have an opportunity for relief through courtesy supervision of this expanding population.

Support Foster care payments for children with parents placed in a licensed residential family based treatment facility for substance abuse.

### **Adult Protective Services**

Support legislation that protects the confidential personal Department of Motor Vehicle records for Adult Protective Services Social Workers and Public Guardians/conservators/administrators performing duties under the law.

Support increase funding for Adult Protective Services (APS), including statewide training for its Social Worker Staff, increase tangible services, and state APS representation with the goal of collecting, analyzing data; develop and provide statewide training; create and fund a statewide automated case management system; and support counties in regulation interpretation..

Support legislation that focuses on elder and dependent adult abuse prevention.

### **In Home Supportive Services**

Support legislation that requires the California Department of Social Services (CDSS) to align their policy with the production of materials for IHSS consumers; requiring CDSS to translate information notices and resources for IHSS consumers in to the consumer threshold languages.

Support legislation that would provide a long-term solution for IHSS funding as the increased IHSS costs will become unsustainable for counties and impact other county services.

Support legislation that would decrease the county share of the IHSS program.

Support an MOE that requires the state to pay the difference of any and all over-expenditures of the IHSS administrative allocation and advocate for the required reopener report to contain recommendations that would ensure the sustainability and stability of IHSS and other critical county programs.

Support a statewide case management system that would allow enhanced coordination, investigation and required data collection.

Support policy and regulations that define the IHSS Social Worker, not a Health Plan Representative, as the professional that conducts home assessment and assigns the hours for the IHSS Applicant/Recipient.

### **Medi-Cal/Managed Care and CalFresh**

Support legislation that helps all eligible Californians get both health coverage and CalFresh benefits with one-stop service. This could provide an unprecedented opportunity to deliver health coverage and nutrition assistance to the estimated six million Californians who qualify for and need both support programs.

Support legislation that maximizes dual participation in Medi-Cal and CalFresh by all dually-eligible Californians, through integrated eligibility processes and targeted in-reach, among other strategies.

Support legislation that establishes new statewide customer service standards for CalFresh that align with those for Medi-Cal and Covered California's programs, to provide excellent, modern service to all consumers.



Support adequate funding for intake (applications) and case management staffing with statewide customer service standardized caseloads for each public assistance program, including supervisory and support services.

Support legislation to expand the Medi-Cal Aged and Disabled Program to resolve the disproportionate Medicaid (Medi-Cal) share-of-cost for the aged (65 and older) and disabled population under the non-Modified Adjusted Gross Income (MAGI) Medi-Cal (MC) program.

Support legislation to Increase Access to Medi-Cal for people experiencing homelessness.

Support equitable state funding to counties for health services to the medically indigent.

Support an equitable share of cost savings for counties realized through implementation of the Affordable Care Act.

Support efforts to assure that any State health care policy replacing the California Health Care for Indigent Program (CHIP) provides the County with offsetting replacement revenues.

Support legislation that preserves and enhances Proposition 99 funding for CHIP.

Support legislation to expedite CalFresh in the event of a federally declared disaster to ensure benefits are issued as soon as possible (up to 24 hours) using Automated Disaster CalFresh freeing up county resources needed to manage all other aspects of an emergency more efficiently.

Support current proposed legislation to reduce hunger for Deferred Action for Childhood Arrivals (DACA) Recipients by expanding federal CalFresh eligibility.

Support legislation to reduce food insecurity to Veteran's who receive Veteran's Aid and Attendance (A&A) income so that the rules align with Medi-Cal income requirements.

Support legislation to expand categorical eligibility for households receiving free/reduced lunch under the Free/Reduced Price Meals Program and improving the direct certification process between Counties and School Districts.

Support legislation that enhances access to prepared meals for the elderly, homeless or disabled Californians through CalFresh Delivery CDSS Proposal for individuals and families with mobility issues or cannot leave their home because of access issues.

Oppose the diversion of Proposition 99 funding from CHIP without offsetting alternative resources.

### **Public Health**

Support legislation that improves access to quality health care among rural and impoverished communities with no added cost to counties.

Support adequate funding for the local public health and behavioral health systems as part of any plan to reform health care.

Support legislation that increases the number and availability of qualified physicians, nursing and other health care professionals through individual incentives such as tuition subsidies and loan repayment as well as economic incentives to health care delivery systems.

Support legislation to maintain sufficient health realignment funding to ensure that counties have resources to meet their obligations to fulfill their statutory public health and indigent healthcare mandates.

Support increasing state and federal funding to support basic public health services, including communicable disease control activities, and community and public health surveillance activities.

Support legislation that would establish and fund chronic disease prevention and health promotion programs, including programs that support healthy environments and address the social determinants of health.

Support legislation that would make health education activities related to chronic disease management, such as diabetes, asthma, obesity counseling and prevention activities, a covered and reimbursable benefit under Medi-Cal, both through fee-for-service reimbursement and health plan capitation payments. We will support legislative efforts to expand opportunities to develop and implement asthma surveillance, prevention and treatment programs.

Support legislation that would expand access to dental health services to low income populations.

Oppose legislation that would eliminate, cap or reduce funding for Targeted Case Management (TCM) services and Medi-Cal Administrative Activities (MMA).

Oppose legislation that would divert 1991 Realignment funding from counties to the state.

### **Emergency Medical Services (EMS)**

Support legislation that maintains County Board of Supervisors oversight of EMS and supports authority of the Local EMS Agency to plan, implement and evaluate all aspects and components of the EMS system.

Support adequate funding for the improvement of the EMS/trauma/specialty care system and emergency room facilities.

Support the State distribution of Federal emergency services and bioterrorism funding to local governments in a manner that achieves maximum allocation and flexibility for local utilization.

Support adequate funding for pre-hospital emergency services, including first responder agencies.

Oppose legislation that would result in fragmentation of the EMS system including provision of EMS independent of the County and its Local EMS Agency.

Oppose legislation that would reduce or eliminate the Maddy Fund distribution formula for local EMS agency use.

## **County Public Administrator**

### **Public Administrator/Guardian/Conservator**

Support legislation that would allow the Public Conservator/Guardian discretion to respond to the court by conducting an investigation into the appropriate case management for the conservatee; limit liability for counties and for the Public Conservator/Guardian; and provide a Federal and/or State funding stream for Public Conservator/Guardian services.

Support legislation that provides mental health assessments and treatment programs while incarcerated or under court/probation supervision that would facilitate the process of applying for Probate Conservatorship or LPS Conservatorship for qualified individuals.

### **Area Agency on Aging**

Support legislation that would provide adequate funding for programs that provide meals, transportation and other assistance to needy seniors.

Support legislation that addresses funding and/or tax credits for the development of memory care facilities and support services for Dementia/Alzheimer patients.

Support the preservation of funding for the Older Americans Act and other supportive services to help older Americans remain living successfully and independently in their homes and communities.

Support legislative and budgetary efforts to reduce fragmentation within the long-term care delivery system and adequately fund a system of care for seniors in California.

Support adequate discretionary funding under the U.S. Administration for Community Living (ACL) for the State Health Insurance Assistance Programs (SHIPs).

Support adequate funding for the implementation of the Elder Justice Act (EJA) of 2010.

Support legislation that would fund grant programs in counties to provide transportation to nonemergency medical services for the senior and disabled populations located in rural, desert and mountain areas.

### **Child Support Services**

Support legislation that promotes parental responsibility to enhance the well-being of children and that enhances the child support program and the continued delivery of adequate services.

Support legislation, budget or administrative action to adequately fund local child support service programming.

Support proposals to fully fund county child support collection program costs.

Support legislation that improves the effectiveness of the child support program in establishing, enforcing, and collecting child support orders.

Support proposals that would hold counties harmless for any error or omission on the part of the State, including failure to meet collection standards.

## **Behavioral Health**

### **Substance Use Disorder Treatment Programs**

Support legislation to stabilize and expand funding for alcohol and drug treatment services for adolescents, their families and adults.

Support adequate funding for residential treatment services under Medi-Cal for adolescents, their families and adults.

Support the allocation of all surtaxes, interest and penalties collected as a result of a reclassification of alcoholic beverages from beer to a distilled spirit to fund alcohol and other drug prevention and treatment services.

Support adequate, stable funding for the Screening and Brief Intervention Referral and Treatment program.

Support funding for collaborative Drug Courts including DUI, Dependency Drug Court, and Reentry Court.

Support the continued funding of Drug Medi-Cal Organized Delivery System Waiver services to address the needs of adolescents, their families and adults with a substance use disorder.

Oppose legislation that attempts to make further cuts to state and federal alcohol and drug treatment funding.

### **Mental Health**

Support the equitable allocation of state and federal mental health funds and provide increased funding in the form of a cost of living adjustment (COLA) for all programs.

Support legislation that would ensure that foster children and their parents/guardians have information about and access to safe and effective treatment for children's mental health special needs.

Support legislation that would establish and fund programs that provide better care coordination for adults and older adults with mental health disabilities and children with mental health special needs.

Support the appropriation of funding to augment services and programs that focus on addressing and preventing factors associated with the high incidence of youth suicide and self-inflicted injuries.

Support efforts to continue flexibility in the allocation of Mental Health Services Act (MHSA) funds to counties.

Support efforts to remove the exclusion of Medicaid coverage for patients aged 21 through 64 who are treated in an Institution for Mental Disease (IMD) or a free-standing non-governmental psychiatric facility.

Support state and federal funding for behavioral health courts.

Support legislation that provides military service veterans afflicted with mental health disorders as a result of their military service, and are criminal defendants, with sentencing court options for treatment and rehabilitation services that allow them to be self-sufficient and successfully re-integrate into society.

Support the appropriation of funding to augment services and programs to address the needs of the older adult population suffering from a mental health condition.

Support efforts to modify existing legislation pertaining to involuntary treatment of individuals detained due to being a danger to self, others or gravely disabled, to provide clarification regarding criteria for an individual who is held involuntarily, who is responsible for providing assessment and treatment and the duties and responsibilities of those providing the assessment and treatment.

Support efforts to increase reimbursements to Acute Care Psychiatric Hospitals who treat individuals brought to them on W&I Code 5150 in order to combat the reduction in acute care psychiatric beds throughout the state.

Oppose legislation designed to divert MHSA funds away from the provision of behavioral health services.